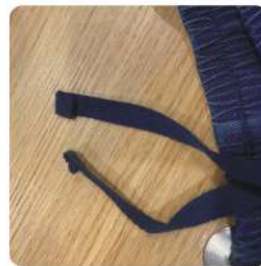
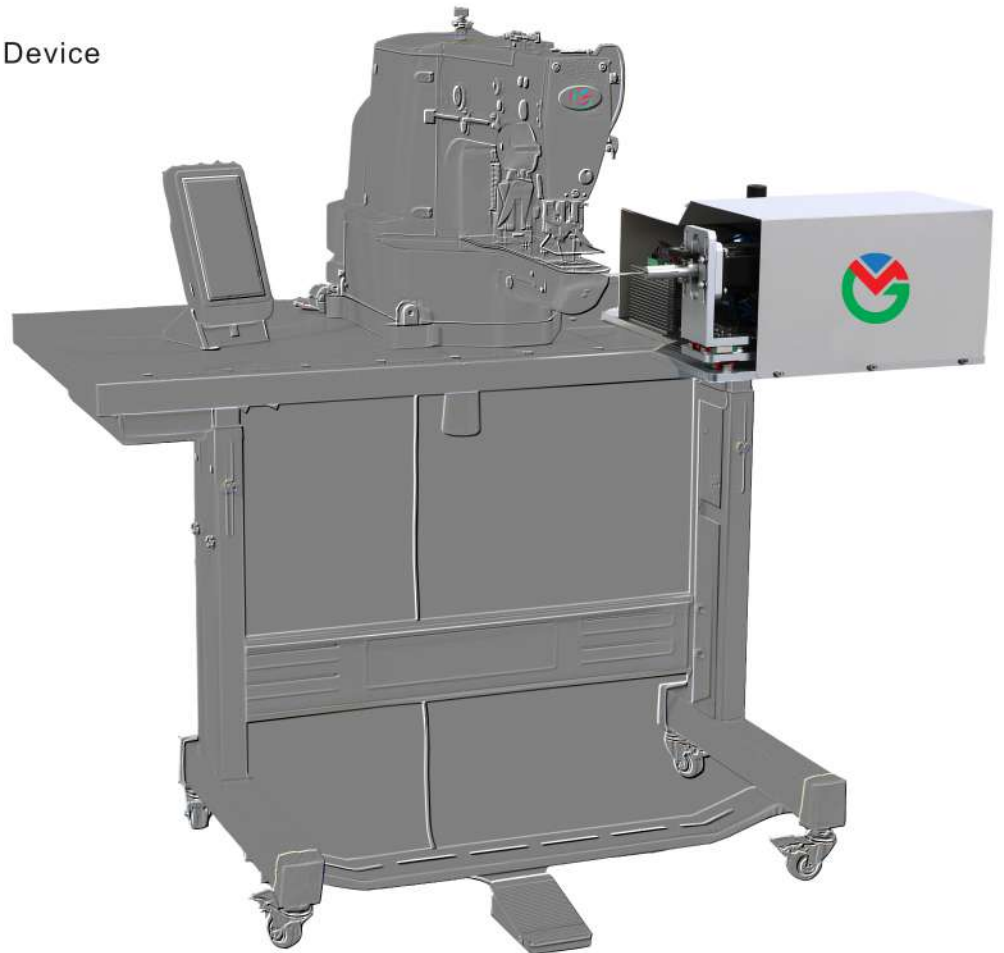


GM-S20

自动卷绳头装置

Automatic Strip Fold Sewing Device



标准折叠宽度=10mm,新机额外提供6mm,8mm夹头
4种标准旋转角度:180°,360°,540°,720°
折叠夹头槽深20mm.
能够安装在重机,兄弟或者其他打结机头上。
Lydia-II控制系统,支持程序远程升级。

Standard folding width = 10mm; Additional 6mm, 8mm folding clip come with the device.
4 Standard folding rotation angle: 180°, 360°, 540°, 720°.
Folding clip slot length is 20mm.
Can be installed on brother, juki, or other brand bartack machine.
Lydia-II control system, Remote upgrade is available
Configuration:   
220V, 50-60 Hz; 0.5-0.6MPa;